



ASIA AIR SURVEY CO.,LTD.

## High-level consultancy based on cutting-edge sensing technology

Providing integrated consulting services from the collection and analysis of geospatial information to the formulation of business plans, using the latest equipment and ICT, in addition to our expertise.



### Cutting-edge technology

We offer accurate and fast surveying with the latest equipment and our special technical capabilities. As professionals in geospatial information, we provide the most suitable services for our customers.

### Comprehensive service

We cover diverse fields such as consultancy on disaster prevention, environmental management, and social infrastructure based on geographic information analysis. We make use of our comprehensive capabilities in various fields related to geographic information to support our customers' business.

### Market needs

We pursue research and development to provide suitable service for the current market needs. We develop cutting-edge surveying, analysis, visualization, and information-sharing technologies.

## CSR / Corporate Social Responsibility

In the event of a large-scale disaster, we consider that accurately grasping the situation is essential for preventative and emergency measures. We therefore carry out photographing independently and make the information publicly available.



Mt. Kirishima eruption  
(taken at 5:00 pm on March 9, 2018 from northwest)



Emergency photography of Great East Japan Earthquake  
(taken at 1:48 pm on March 13, 2011 Port of Sendai)

## Overseas Projects

We have put much effort into the maintenance of geospatial information such as topographic maps that are indispensable to the building of social infrastructure mostly in developing countries. In recent years, we have proactively been developing consulting for forestry conservation planning, REDD+, and other areas involving the environment and disaster prevention. We provide solutions to issues such as global warming and biodiversity.



Training in the use of a transit compass for forest survey



Checking a topographic map



GIS Technology transfer



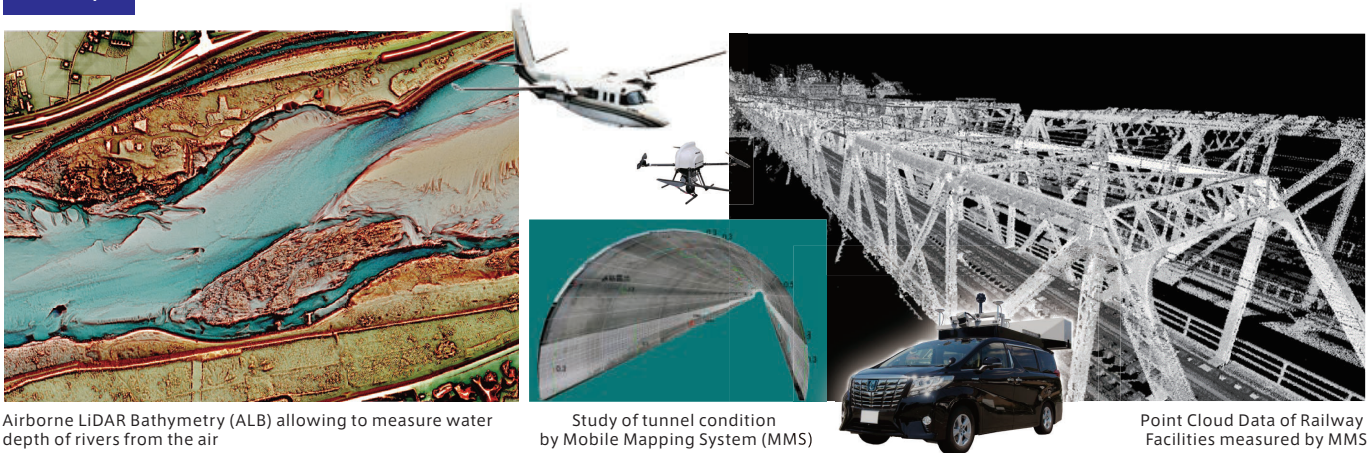
Forest survey





## Geospatial Survey

Airborne and space-borne remote sensing, vehicle-mounted laser scanning surveys



Airborne LiDAR Bathymetry (ALB) allowing to measure water depth of rivers from the air

Study of tunnel condition by Mobile Mapping System (MMS)

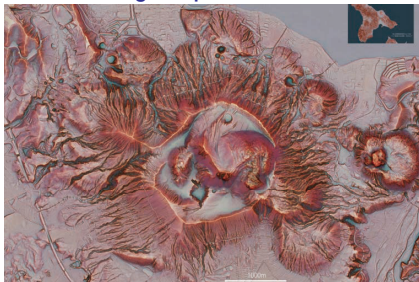
Point Cloud Data of Railway Facilities measured by MMS



## Mapping/GIS/Systems

Mapping, GIS for administrations, and Systems development

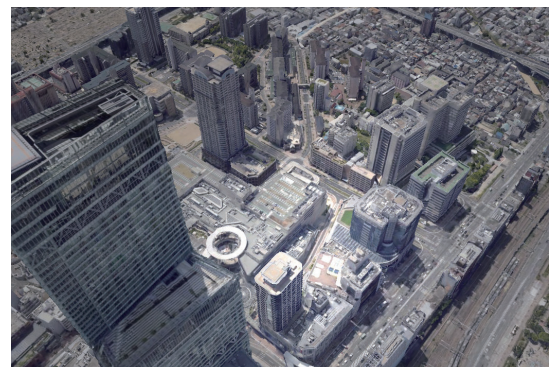
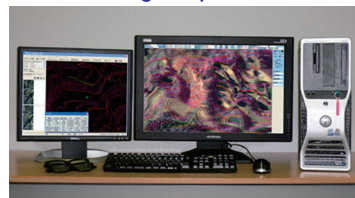
### Red Relief Image Map



Red Relief Image Map of Mount Usu (measured on May 5, 2005) Patented stereoscopic image generation apparatus and stereoscopic image generation program (Japanese Patent No. 4272146), Stereoscopic image generation device (Japanese Patent No. 5281518), etc.

Red Relief Image Map (RRIM) is a novel 3D visualization technique developed by AAS to represent features on the land surfaces, sea floor as well as other celestial bodies. RRIM is based on different topographic elements, which can be derived from LIDAR, ASTER GDEM, GTOPO30 and ETOPO2.

### Red Relief Image Map

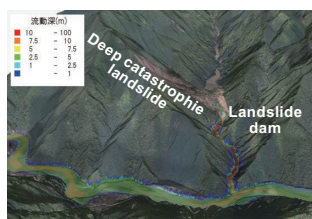


3D Model from Oblique Camera Images

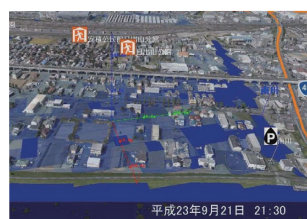


## Construction Consultant

Disaster Management / Environmental Management / Infrastructure Asset Management



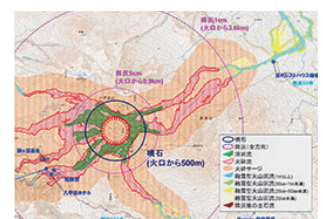
Landslide Dam Outburst Foods Simulation



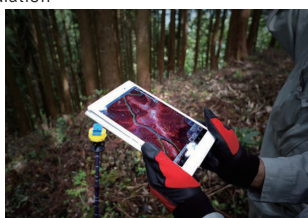
Flood Hazard Map (Koriyama City)



Maintenance Plan of Historical Sabo Facilities



Volcanic Hazard Map



Mobile Field Survey System for Forest Management



Consulting Service on Road Improvement for Local Government



Small Hydroelectric Power Generation (Magoishi hydroelectric power plant / Aqua Power Tohoku Co., Ltd.)



ASIA AIR SURVEY CO., LTD.

<http://www.ajiko.co.jp>




**ASIA AIR SURVEY CO.,LTD.**

## Company profile

<b>Company name</b>	ASIA AIR SURVEY CO., LTD.
<b>Foundation</b>	February 26th, 1954
<b>Capital</b>	1,673,778,000 yen
<b>President and CEO</b>	Kiichiro Ogawa
<b>Main offices</b>	Shinjuku Head Office (Registered) : Shinjuku Green Tower Building 15F, 6-14-1 Nishi-shinjuku, Shinjuku-ku, Tokyo 160-0023, Japan Shinyurigaoka Head Office : Shinyuri 21 Building 3F, 1-2-2 Manpukuji, Kawasaki-shi, Kanagawa Prefecture 215-0004, Japan
<b>Employees</b>	1,198 (as of Mar. 31, 2018)
<b>Stock listing</b>	Tokyo Stock Exchange, Second Section (Stock code: 9233)
<b>Line of business</b>	<ul style="list-style-type: none"> <li>• Aerial photogrammetric and topographic mapping • Remote sensing</li> <li>• Geographic information management • Fixed assets-related business</li> <li>• Facility information management (Electric power, water supply and sewerage, roads, etc.)</li> <li>• Environmental surveys and assessment • Geological surveys / hydrological surveys</li> <li>• Construction consultant (Urban and regional planning, river/erosion control, coastal and marine consulting, road, water supply and industrial waterworks, sewerage works, landscaping, ports and airports, soil quality and foundations, agricultural engineering, steel structures and concrete, construction environment, forest engineering, geology)</li> </ul>
<b>Registrations</b>	Registered in Japan as a survey company; as a construction consultant; as a geological survey company; as a compensation consultant; as a certified designated investigation institution in accordance with the Soil Contamination Countermeasures Act; as a measurement certification business operators (seismic intensity acceleration level, sound pressure level) Registered in Japan as a Class One Architectural Office, Special Construction (Scaffolding and Earthworks), Specified Worker Dispatch Agency
<b>License</b>	Licensed by the Minister of Transport for Aerial Work Services, License No. 25 (February 27th, 1956)
<b>Registered Certifications</b>	ISO 9001 : 2015 ISO 14001 : 2015 ISO/IEC 27001 : 2013 ISO/IEC 20000-1 : 2011
<b>Privacy mark</b>	ISO 55001 : 2014

Accurate as of October 1st, 2018

## Group Companies

• Universal Technology Co., Ltd.	1-1-15 Kita 41 Johigashi, Higashi-ku, Sapporo-shi, Hokkaido 007-0841, Japan
• TAC Engineering Co., Ltd.	2-3-20 Tsushidanishi, Morioka-shi, Iwate Prefecture 020-0836, Japan
• Advanced Technology Co., Ltd.	1-5-10 Higashi Sendai, Miyagino-ku, Sendai-shi, Miyagi Prefecture 983-0833, Japan
• Prime Plan Co., Ltd.	Honta Bldg., 142 Motosojamachi, Maebashi-shi, Gunma Prefecture 371-0846, Japan
• Sun Geography Technical Co., Ltd.	Clean Home Chiba, 2-6-8 Shinjuku, Chuo-ku, Chiba-shi, Chiba Prefecture 260-0021, Japan
• Chubu Technostructure Co., Ltd.	2-141 Hongo, Meito-ku, Nagoya-shi, Aichi Prefecture 465-0024, Japan
• GEO Techno Kansai Co., Ltd.	AG Nishinomiya Bldg., 12-20 Ikeda-cho, Nishinomiya-shi, Hyogo Prefecture 662-0911, Japan
• Research Institute for Future Co-creation Co., Ltd.	Shinyurui 21 Building 3F, 1-2-2 Manpukuji, Kawasaki-shi, Kanagawa Prefecture 215-0004, Japan
• Yon-kou Consultant Co., Ltd.	2057-6 Kamifukuoka-cho, Takamatsu-shi, Kagawa Prefecture 760-0077, Japan
• Asia Air Survey Myanmar Co., Ltd.	No.E-207, Diamond Centre, Pyay Road, Kamaryut Township, Yangon, Myanmar

## CSR Activities



We will make use of our technologies toward natural and environmental conservation, environmental education, disaster prevention awareness, etc., and proceed with efforts to achieve a safe and secure community.

We will also endeavor in the rapid provision of information and restorative/reconstruction support in the event of environmental burdens occurring in an emergency such as natural disasters.

## History

1954	Establishment (Inauguration) of Asia Aerial Survey Company	1998	Acquisition of ISO9001 certification
1956	Licensed for Aerial Work Services by the Ministry of Transport	2003	Transfer of Technology Center from Atsugi City, Kanagawa Prefecture to Asao-ku, Kawasaki City (Shinyuri Technology Center)
1960	Development of the analytical aerial triangulation system, the world's first practical application	2004	Acquisition of ISO14001 certification
1963	Change of company name to Asia Air Survey Co., Ltd. (Capital raised to 100,500,000 yen)	2005	Acquisition of ISO/IEC27001 certification
1964	Listing on the Tokyo Stock Exchange, Second Section	2008	Transfer of head office functions from Shinjuku-ku, Tokyo to Asao-ku, Kawasaki City (Shinyurigaoka Head Office)
1965	Transfer of head office to Tsurumaki, Setagaya-ku, Tokyo	2009	Acquisition of Privacy Mark
1965	Establishment of Kansai Branch	2012	Acquisition of Eco-First certification
	First overseas project: ground control point survey in Ghana	2014	Acquisition of ISO/IEC20000-1 certification
1981	Establishment of Technology Center in Atsugi City	2017	Acquisition of ISO55001 certification
1982	Completion of new head office building in Tsurumaki		
1989	Transfer of head office to Shinjuku-ku, Tokyo		


**ASIA AIR SURVEY CO.,LTD.**
<http://www.ajiko.co.jp>