



AZuka

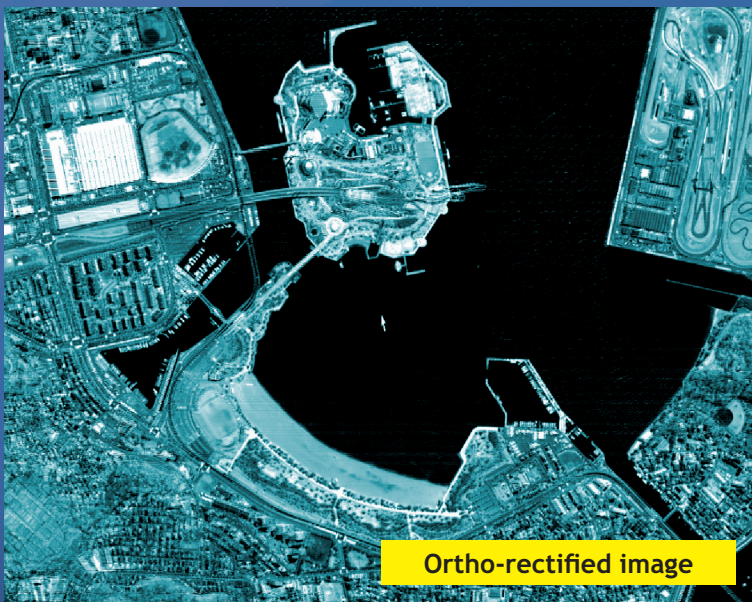
The Ultimate 3D digital mapping system



Features extraction

WHAT IS AZUKA?

AZuka is a professional photogrammetric mapping software developed by Asia Air Survey providing multiple tools for 3D digital mapping. The software integrates a wide range of applications such as topographic mapping, civil engineering, geology, architecture, archaeology and 3D measurement. AZuka can be used to analyse data acquired from both airborne and satellite sensors. The digital mapping workstation allows multiple stereo viewing mode (i.e., both frame-sequential and interlaced). AZuka provides an easy integration with CAD and GIS professional software.



Ortho-rectified image

WHO CAN USE AZUKA?

Designed by photogrammetrists for photogrammetric production, user-friendly Azuka is easy to learn in a short time even for a stereo operator with no experience in 3D digital mapping. The all-in-one concept allows AZuka to be used for all types of applications, which require image processing. No high spec pc or special stereo graphic cards are required. AZuka can be run on a laptop.

AZUKA, A COST-EFFECTIVE PROFESSIONAL PHOTOGRAMMETRIC MAPPING SOFTWARE

AZUKA ALL-IN-ONE SOFTWARE OFFERS:

1. PROJECT MANAGEMENT

Photogrammetric project setup and management

2. TRIANGULATION

- GNSS/IMU data import
- Automatic interior orientation
- Automatic conjugate points extraction
- Relative orientation
- Absolute orientation
- Bundle adjustment
- Rectified image generation

3. AUTOMATIC DEM GENERATION

Stereo matching method DEM generation

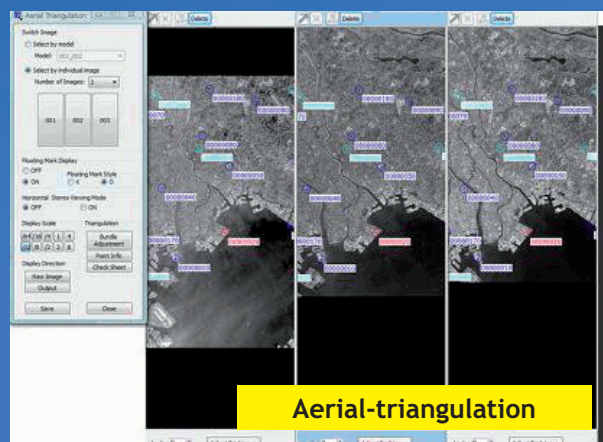
4. FEATURE EXTRACTION AND EDITING

Features are directly captured along with 3D information from stereo pair images. All the essential

functions and tools for feature extraction and editing are provided. Contour and TIN data are generated automatically.

5. ORTHO IMAGE GENERATION AND MOSAICING

- Orthoimage production
- Automatic seamlining
- Seamline editing
- Colour balancing



TECHNICAL SPECIFICATIONS

MINIMUM SYSTEM REQUIREMENTS	<ul style="list-style-type: none"> · OS: Windows XP / Vista / 7 / 8 · 2GB of memory · Intel™ Core2 - 2.4 GHz · CD/DVD drive · 120GB hard disk · Dual monitor (Minimum 17" 1280x1024 for the tools display and 20" 1280x1024 100Hz refresh rate for the stereoscopic vision display)
DATA HANDLED	Aerial photo images: <ul style="list-style-type: none"> · Scanned image · DMC · UltraCam series Satellite images with RPC: <ul style="list-style-type: none"> · ALOS PRISM · IKONOS · QuickBird · WorldView · GeoEye
EXPORT / IMPORT FORMATS	<ul style="list-style-type: none"> · Microstation .dgn · AutoCAD .dwg · Shapefile .shp
OPTIONAL FEATURES	<ul style="list-style-type: none"> · IFSAR mapping (pseudo stereo 3D mapping) · X Y steering handle and Z disc