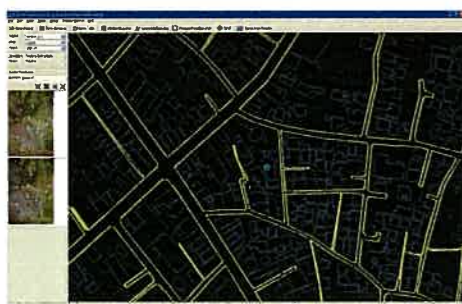


## Usage Examples



Generated data by  
AZuka



3D model by AZuka  
& Land Viewer ®

AZuka creates various types of models and maps

## Software Overview

- ✓ High-end technology at Low cost
- ✓ Multiple stereo viewing mode
- ✓ Simple operate and short training time

## Export / Import formats

- MicrostationV7,V8 format
- DWG (AutoCAD)
- SHP (ESRI GIS)

## Options

- ORI-Mapping Tool for IFSAR-Imagery (Pseudo-Stereo 3D mapping)
- XY handle /Z-board

## OS: Windows XP / Vista / 7

Minimum system consists of :

- 2048MB Memory
- Intel®, Core™2 Duo processor, 2.4GHz or more
- CD-ROM drive or DVD-ROM to install for sample data
- 120GB hard-disk
- Minimum 17Inch display and 1280 x 1024 resolution graphics (SVGA) ,for working display: minimum 20Inch display
- 1280 x 1024 resolution graphics (SVGA) and refresh rate 100Hz for stereoscopic vision display
- Stereoscopic viewing panel or Glasses

## Handling Data

### Aerial Photo images

- Scanned Image
- DMC
- UltraCam series

### Satellite Image with RPC

- ALOS/PRISM
- IKONOS
- QuickBird
- WorldView-1,2
- GeoEye - 1

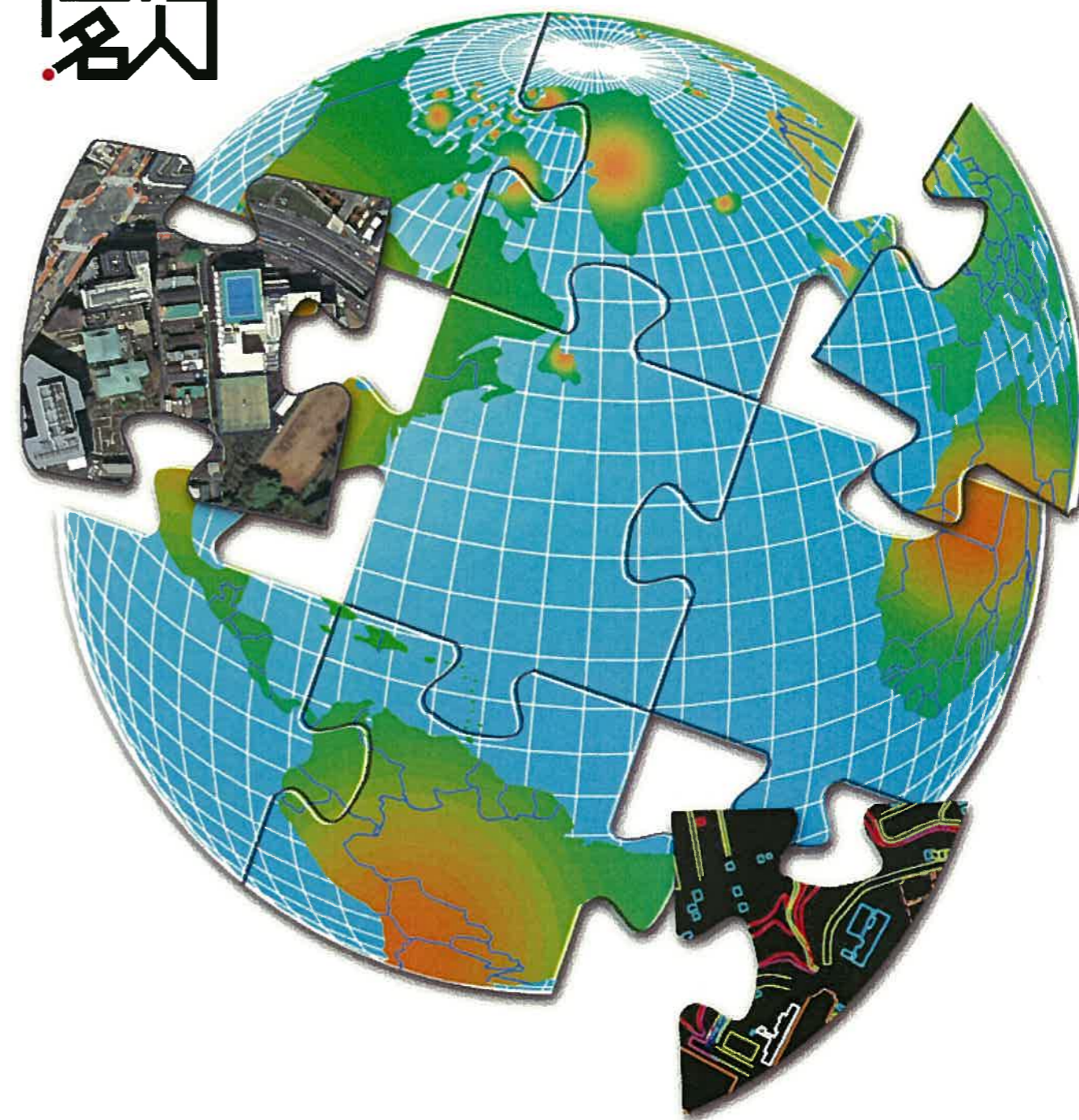
## Contact Us

### ASIA AIR SURVEY Co.,LTD.

Shinyuri21building,1-2-2 Manpukuji,Asao-ku,Kawasaki City,Kanagawa,JAPAN 215-0004

Website : <https://meijin.survey.ne.jp/azuka/>

E-Mail : AZUKA\_AAS@ajiko.co.jp



# 3-D Digital Mapping Expert

# AZuka

Supports Airborne & Satellite image Sources



**ASIA AIR SURVEY**



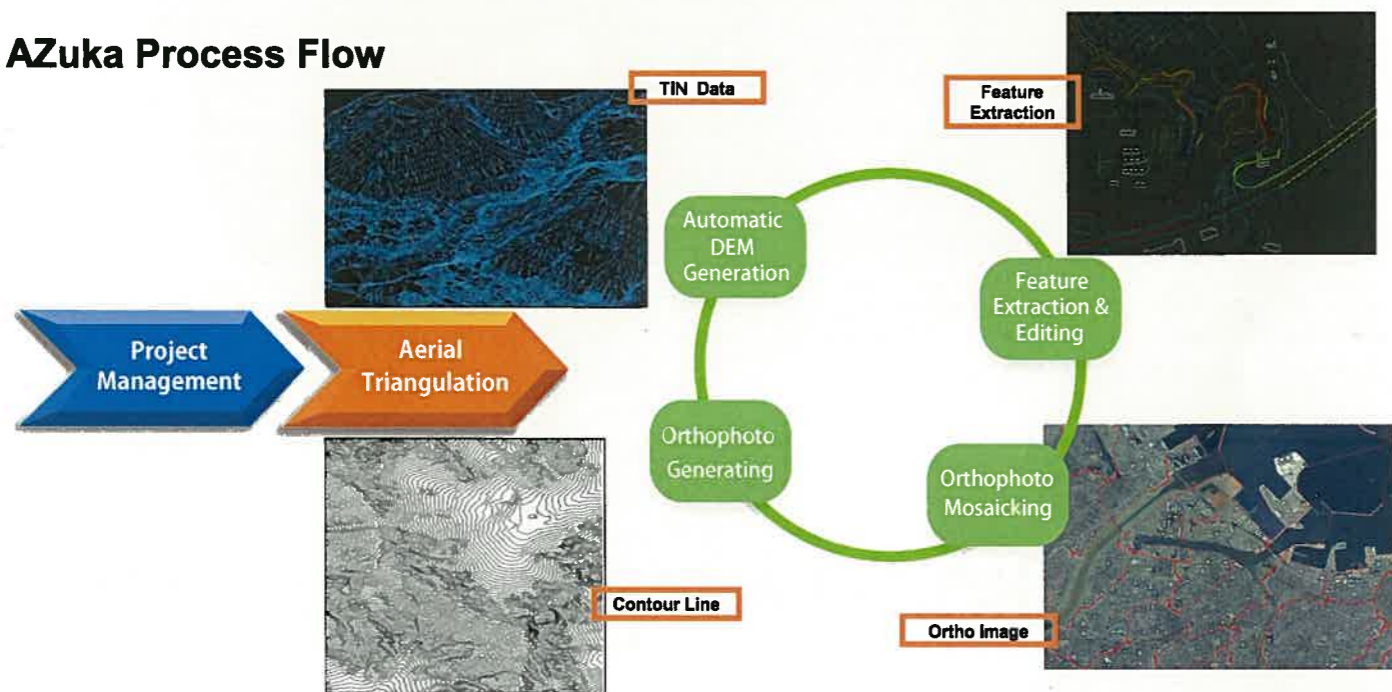
# 3-D Digital Mapping Expert AZuka



## AZuka helps your digital mapping project

Business started in 1949, ASIA AIR SURVEY has long supported to progress of the measurement industry. Since we successfully developed the world's first digital analyzing technique of aerial triangulation (AT) in 1960, we design and develop innovative systems and technologies to keep pace with the rapid changes in the world environment.

### AZuka Process Flow



AZuka is PC-based 3D Digital Mapping Software to generate various data which is necessary to use photogrammetry and geospatial analysis. All essential functions and applications for triangulation, DEM extraction, ortho image generating/mosaicking and feature extraction are combined into one software. Furthermore, all functions are controlled by mouse and keyboard and have high usability. AZuka helps to improve both operational efficiency and cost effectiveness. Generated data and images are used for GIS database, 3D model, Digital Surface Models and more.

AZuka works with various image resources such as scanned Image, DMC, UltraCam series, ALOS/PRISM, IKONOS, GeoEye-1, QuickBird, WorldView-1/2.

## 1. Project Management

Photogrammetric project setup and management

## 2. Triangulation

AZuka has the following functions for precise Triangulation:

- GNSS/IMU Import
- Automatic interior orientation
- Automatic conjugate points extraction
- Relative orientation
- Bundle adjustment
- Generating rectified images

## 3. Automatic DEM

Create DEM automatically by stereo matching method.

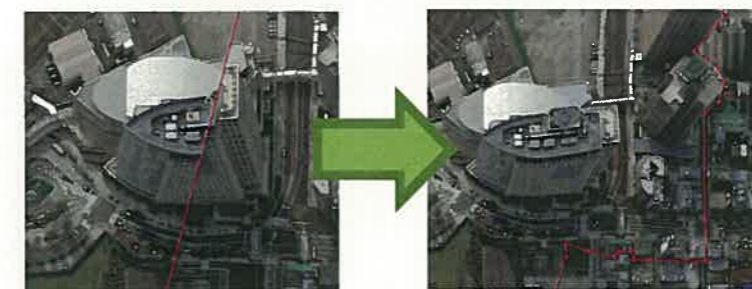
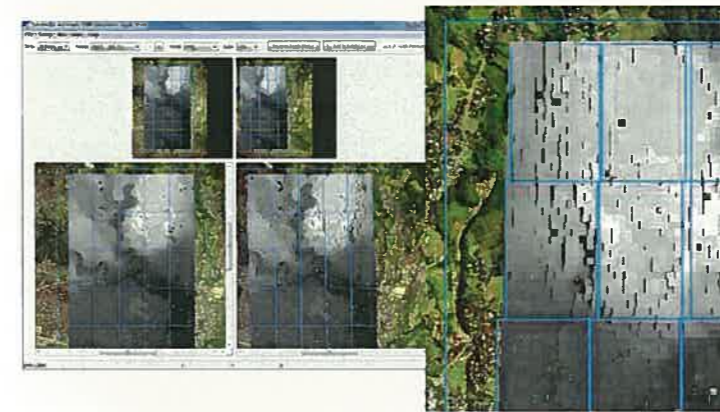
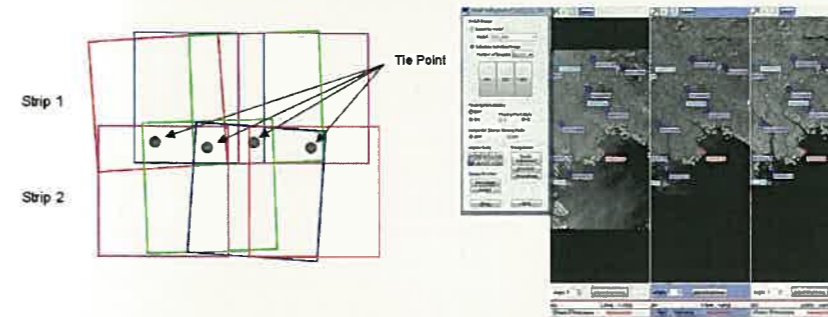
## 4. Feature Extraction & Editing

Features are directly captured with 3d information from images. Attribution, text-entry & color coding are edited semi-manually or manually. AZuka has all essential functions for feature extracting and editing. Contour and TIN data are generated automatically.

## 5. Ortho Image Generating & Mosaicking

Azuka has all essential tool for ortho image producing:

- Automatic seamline
- Seamline editing
- Color balancing



All functions in one software !