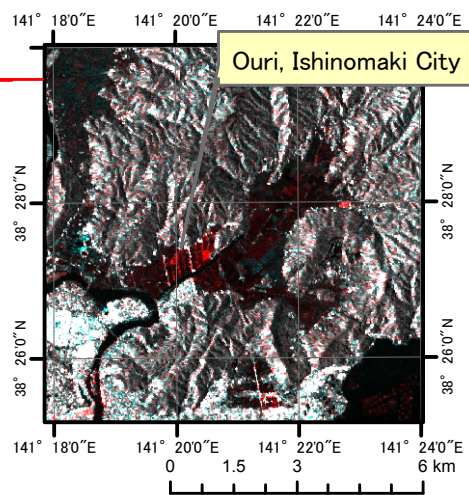
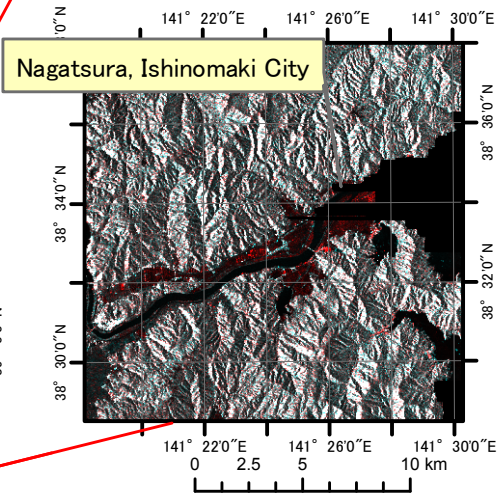
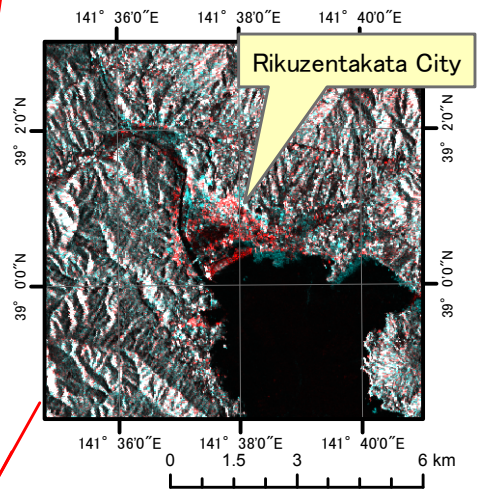
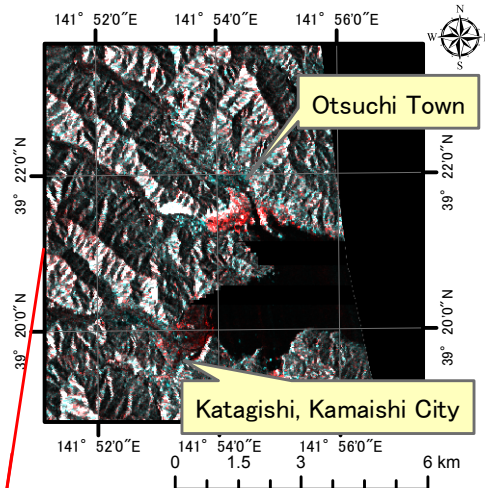


ALOS/PALSAR amplitude image (Oct. 28, 2010)  
Background color image is based on SRTM3 elevation.



## "The 2011 off the Pacific coast of Tohoku Earthquake" Damaged Area Estimation

### Location Diagram

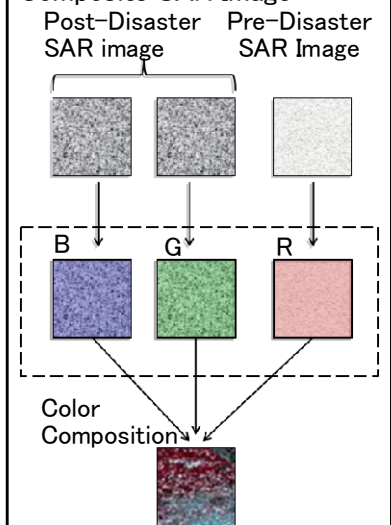


Color tone and texture will be different appearance according to the condition of the ground surface in SAR images such as ALOS/PALSAR.

Compared to SAR images before and after disaster, if dry area is flooded or still wet generally the flood and wet area will appear darker tone than dry area.

Flood area is displayed in red color in center four SAR images. The color tone is calculated by compositing before and after disaster SAR images.

### Conceptual Diagram of Color Composite SAR Image



Satellite Data Sources  
Sensor Name: PALSAR  
Product Level Name L1.0CEOS  
Processed by ERSDAC  
Ownership of Original Data belongs to METI, JAXA

Oct. 28, 2010 (FBD)  
Mar. 15, 2011 (FBS)